

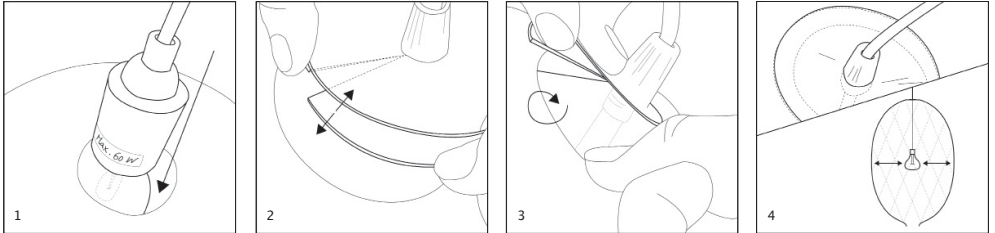
Congratulations on your lampshade!

This product is made by hand.

Our lampshades are made out of different fabrics, pigments and water-based textile hardener. If properly looked after, your lampshade will have a long life.

We hope you will enjoy it!

Jeannine van Erk & Veronika Becker



## ASSEMBLY AND INSTALLATION

### 1

Take the lampshade out of the packaging. During transport, the balloon might have lost air, so please check whether the lampshade has dents.

If this is the case, please follow the instructions as described under PROBLEMS below.

### 2

Let the air out of the balloon and if the lampshade is not immediately suspended place it upright on a tray. Do not lay the lampshade down.

Rinse the balloon with warm water so that it regains its original shape.

Keep it, together with the clamp, in a little bag after drying with some flour or baby powder (this avoids stickiness).

### 3

Figures 1 to 3 show how to hang the lampshade. Use a clear LED lightbulb (max. 60W) for optimum lighting conditions and make sure that it hangs free within the lampshade without touching the sides (see figure 4).

### 4

Caution:

The lampshade is not suitable for rooms where it would be exposed to dampness (bathrooms, cellars, etc.), as this could deform it permanently.

## **TRANSPORT**

Should you need to transport the lampshade, e.g. when moving, blow up the balloon inside the lampshade to support its shape, using the clamp provided to close the balloon. Cover it with a plastic sheet or bag to protect it from dirt and dampness.

## **PROBLEMS**

During transport or a long period in storage, the lampshade may have become deformed. Dents can be easily remedied by:

\*

Blowing up the balloon firmly inside the lamp.  
If you have difficulties with this, we will be happy to send you a small pump.

\*

When the balloon has been firmly blown up and the lamp has returned to its proper shape, use the clamp to close the balloon.

\*

You can use a water spray bottle to give the lampshade a very thin coat of water. When the lampshade is completely dry, remove the balloon.

\*

Should the balloon cause new dents when you try to remove it, immediately inflate the balloon again until the dents are no longer visible. Open the clamp, remove the balloon and it's done.

## **CARE**

Use a soft brush to remove dust. Avoid contact with moisture.