

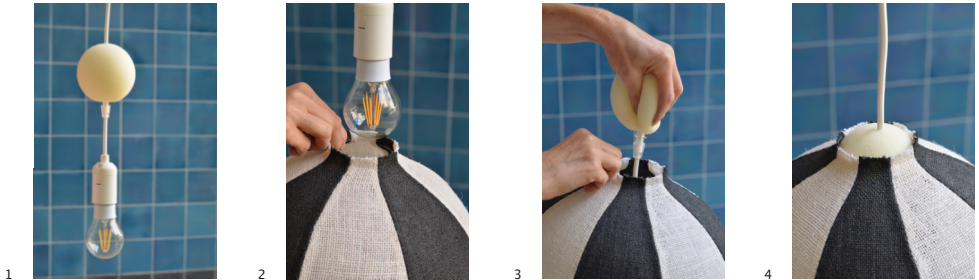
Congratulations on your pendant light!

This product is made by hand.

Our lights are made out of different fabrics and water-based textile hardener. If properly looked after, your light will have a long life.

We hope you will enjoy it!

- studio berk -



ASSEMBLY AND INSTALLATION

1

Take the light out of the packaging. During transport, the balloon might have lost air, so please check whether the light has dents.

If this is the case, please follow the instructions as described under PROBLEMS.

2

Let the air out of the balloon and if the light is not immediately suspended place it upright on a tray. Do not lay the light down.

Rinse the balloon with warm water so that it regains its original shape.

Keep it, together with the clamp, in a little bag after drying with some flour or baby powder (this avoids stickiness).

3

Figures 1 to 4 show how to hang the light. The foam ball is slid onto the cable. Screw the light bulb in the socket. You can change the distance of the ball by turning and moving the transparent cap.

Hold the light at the top and push the ball, socket etc. carefully through the opening of the light. When it's all in place, the ball hangs loosely in the light and is ready to be hung up.

4

Use a clear LED lightbulb for optimum lighting conditions and make sure that it hangs free within the light without touching the sides.

TRANSPORT

Should you need to transport the light, e.g. when moving, blow up the balloon inside the light to support its shape, using the clamp provided to close the balloon. Cover it with a plastic sheet or bag to protect it from dirt and dampness.

PROBLEMS

During transport or a long period in storage, the light may have become deformed. Dents can be easily remedied by:

*

Blowing up the balloon firmly inside the light.
If you have difficulties with this, we will be happy to send you a small pump.

*

When the balloon has been firmly blown up and the light has returned to its proper shape, use the clamp to close the balloon.

*

You can use a water spray bottle to give the light a very thin coat of water. When the light is completely dry, remove the balloon.

*

Should the balloon cause new dents when you try to remove it, immediately inflate the balloon again until the dents are no longer visible. Open the clamp, remove the balloon and it's done.

CARE

Use a soft brush to remove dust. Avoid contact with moisture.

CAUTION

The light is not suitable for rooms where it would be exposed to dampness (bathrooms, cellars, etc.) or direct sunlight, as this could deform it permanently.